



FREEHOLD

House - Semi-Detached

# 4 BEDROOM EXTENDED HOME - EDGWARE HA8

Offers In Excess Of

# £700,000

## FEATURES

- Large 4 bedroom extended house
- 3 double bedrooms + 2 bathrooms
- Solar panels to the roof saving you MONEY!
- Well laid out garden at rear
- Large eat in kitchen
- Rear office/outhouse/storage space
- Driveway for several cars
- CHAIN FREE SALE



# 4 Bedroom House - Semi-Detached located in Edgware

Space Residential are delighted to present this sensibly laid-out and extended family-sized 4-bedroom home located just off Farm Road on Deans Way.

On entering the house through the porch, a generous hallway awaits with a guest w.c. leading into a large through lounge/dining room and a modern eat-in breakfast room with a fabulous modern wrap-around kitchen, incorporating a sit-up breakfast bar and a plethora of storage units and modern integrated appliances.

Stairs lead to the first floor, where there are 2 double bedrooms, both with fitted wardrobes, and a single 3rd bedroom (currently utilised as an office) and a family bathroom encompassing a bath and separate shower cubicle.

The loft has also been converted to provide a large, airy master bedroom with further eaves storage and a private en-suite shower room with a W.C. and sink.

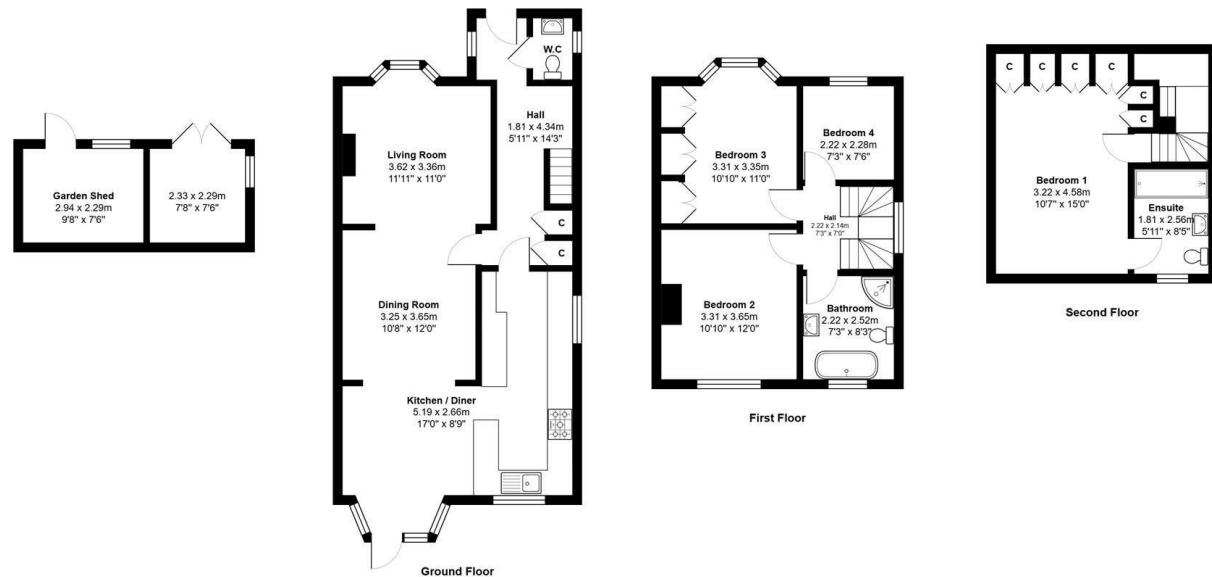
Call us on

**0208 906 2222**

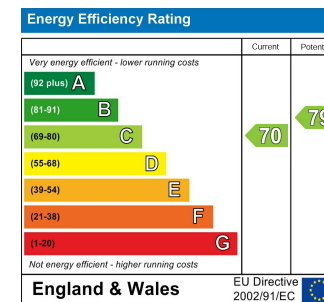
[info@spaceresidential.com](mailto:info@spaceresidential.com)  
[spaceresidential.com](http://spaceresidential.com)

**Council Tax Band**

**E**



Total Area: 143.8 m<sup>2</sup> ... 1548 ft<sup>2</sup>  
 All measurements are approximate and for display purposes only.



Agents Note: Whilst every care has been taken to prepare these particulars, they are for guidance purposes only. All measurements are approximate and are for general guidance purposes only and whilst every care has been taken to ensure their accuracy, they should not be relied upon and potential buyers are advised to recheck the measurements.

